

TOP UP PACKAGES

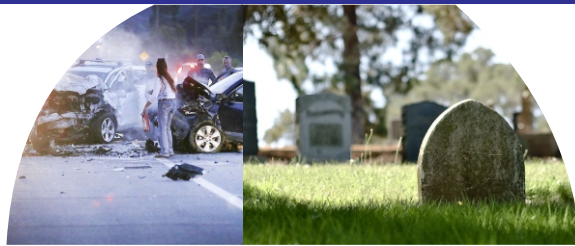


CASH COVER

This funeral cover benefit will pay R10 000 once-off.

| | |
|------------------------|-------|
| Single Member (16-64) | R 100 |
| Single Member (65-74) | R 175 |
| Single Member (75-85) | R 270 |
| Single Member (85-100) | R 450 |
| Single Parent (18-64) | R 120 |
| 1+5 - (18-64) | R 485 |
| 1-9 (18-64) | R 790 |
| 1+13 (18-64) | R1095 |

Terms and Conditions will apply








Get Peace Of Mind With Strydom Grave Plan

| | |
|--------------------------|------|
| Single Member (16-64) | R50 |
| Single Member (65-74) | R90 |
| Single Member (75-85) | R135 |
| Single Member (85-100) | R225 |
| Member + Spouse (18-64) | R85 |
| Member + Spouse (65-75) | R110 |
| Member + Spouse (75-85) | R190 |
| Member + Spouse (85-100) | R395 |
| Member + Family (18-64) | R100 |
| Member + Family (65-75) | R160 |
| Member + Family (75-85) | R250 |
| Member + Family (85-100) | R450 |
| 1+5 | R245 |
| 1+9 | R395 |
| 1+13 | R550 |

Visit any branch near you
www.strydomfuneralhome.co.za

| | |
|--------------------------|------|
| Single Member (16-64) | R50 |
| Single Member (65-74) | R90 |
| Single Member (75-85) | R135 |
| Single Member (85-100) | R225 |
| Member + Spouse (18-64) | R85 |
| Member + Spouse (65-75) | R110 |
| Member + Spouse (75-85) | R190 |
| Member + Spouse (85-100) | R395 |
| Member + Family (18-64) | R100 |
| Member + Family (65-75) | R160 |
| Member + Family (75-85) | |
| Member + Family (85-100) | R450 |

Funeral Cover From As Little As R65 p.m.

-  044 279 1009
-  079 516 0145 or SMS *Please Call*
-  info@strydomfuneralhome.co.za
-  www.strydomfuneralhome.co.za
-  Strydomfuneralhome



BUS PLUS BUILD OUT OF GRAVE

FROM AS LITTLE AS
R495



PLATINUM PLAN

- Collection of the deceased
- Storage of the body
- Washing and preparation of the body
- Assistance in registration of death
- Standard Dome Casket
- Coffin Spray
- 80 Programmes
- Hearse
- Wooden cross
- Enlarged photo

CEMETERY SET UP

- Family & Grave gazebo
- Lowering device + Pastures/Blue carpet
- Still water for the family
- Covered chairs

BENEFITS

- Include: R5 000 Benefits
- R1 500 Meat, R1 500 Groceries, R500 Cash
- R1 000 Bus Transport, R300 Airtime, R200 Paint

| Platinum Plus Pricing | |
|--|------|
| Member (18-64) | R370 |
| Member + Children (18-64) | R385 |
| Family (Member Spouse, 6 children)(18-64) | R400 |
| Member (65-74) | R395 |
| Member + Children (65 - 74) | R400 |
| Family (Member Spouse, 6 children)(65-74) | R420 |
| Member (75-100) | R400 |
| Member + Children (75-100) | R410 |
| Family (Member Spouse, 6 children)(75-100) | R445 |
| 1 + 5 Members (18-64) | R410 |
| 1 + 9 Members (18-64) | R480 |
| 1 + 13 Members (18-64) | R532 |
| 1 + 5 Members (65-74) | R535 |
| 1 + 9 Members (65-74) | R560 |
| 1 + 13 Members (65-74) | R700 |
| 1 + 5 Members (75-100) | R580 |
| 1 + 9 Members (75-100) | R600 |
| 1 + 13 Members (75-100) | R885 |

FROM AS LITTLE AS
R385



GOLD PLAN

- Collection of the deceased
- Storage of the body
- Washing and preparation of the body
- Assistance in registration of death
- Half View Casket
- Wooden cross
- Hearse
- Coffin Spray
- 80 Programmes
- Enlarged photo

CEMETERY SET UP

- Family & Grave gazebo
- Lowering device + Pastures/Blue carpet
- Still water for the family
- Covered chairs

BENEFITS

- Include: R5 000 Benefits
- R1 500 Meat, R1 500 Groceries, R500 Cash
- R1 000 Bus Transport, R300 Airtime, R200 Paint

| Gold Plus Pricing | |
|--|------|
| Member (18-64) | R290 |
| Member + Children (18-64) | R295 |
| Family (Member Spouse, 6 children)(18-64) | R320 |
| Member (65-74) | R310 |
| Member + Children (65 - 74) | R320 |
| Family (Member Spouse, 6 children)(65-74) | R335 |
| Member (75-100) | R320 |
| Member + Children (75-100) | R325 |
| Family (Member Spouse, 6 children)(75-100) | R365 |
| 1 + 5 Members (18-64) | R335 |
| 1 + 9 Members (18-64) | R405 |
| 1 + 13 Members (18-64) | R455 |
| 1 + 5 Members (65-74) | R455 |
| 1 + 9 Members (65-74) | R475 |
| 1 + 13 Members (65-74) | R620 |
| 1 + 5 Members (75-100) | R500 |
| 1 + 9 Members (75-100) | R600 |
| 1 + 13 Members (75-100) | R800 |

FROM AS LITTLE AS
R275



SILVER PLAN

- Collection of the deceased
- Storage of the body
- Washing and preparation of the body
- Assistance in registration of death
- Half View Flat Lid
- Coffin Spray
- Hearse
- Wooden cross
- 80 Programmes
- Enlarged Photo

CEMETERY SET UP

- Family & Grave gazebo
- Lowering device + Pastures/Blue carpet
- Still water for the family
- Covered chairs

BENEFITS

- Include: R5 000 Benefits
- R1 500 Meat, R1 500 Groceries, R500 Cash
- R1 000 Bus Transport, R300 Airtime, R200 Paint

| Silver Plus Pricing | |
|--|------|
| Member (18-64) | R205 |
| Member + Children (18-64) | R215 |
| Family (Member Spouse, 6 children)(18-64) | R235 |
| Member (65-74) | R220 |
| Member + Children (65 - 74) | R235 |
| Family (Member Spouse, 6 children)(65-74) | R255 |
| Member (75-100) | R235 |
| Member + Children (75-100) | R245 |
| Family (Member Spouse, 6 children)(75-100) | R280 |
| 1 + 5 Members (18-64) | R210 |
| 1 + 9 Members (18-64) | R320 |
| 1 + 13 Members (18-64) | R370 |
| 1 + 5 Members (65-74) | R370 |
| 1 + 9 Members (65-74) | R395 |
| 1 + 13 Members (65-74) | R535 |
| 1 + 5 Members (75-100) | R415 |
| 1 + 9 Members (75-100) | R440 |
| 1 + 13 Members (75-100) | R720 |

FROM AS LITTLE AS
R85



STANDARD PLAN

- Collection of the deceased
- Storage of the body
- Washing and preparation of the body
- Assistance in registration of death
- Flat Lid Coffin
- 80 Programmes
- Enlarged photo
- Coffin Spray
- Wooden cross
- Hearse

CEMETERY SET UP

- Family & Grave gazebo
- Lowering device + Pastures/Blue carpet
- Still water for the family
- Covered Chairs

BENEFITS

- Include: R5 000 Benefits
- R1 500 Meat, R1 500 Groceries, R500 Cash
- R1 000 Bus Transport, R300 Airtime, R200 Paint

| Standard Plus Pricing | |
|--|------|
| Member (18-64) | R85 |
| Member + Children (18-64) | R95 |
| Family (Member Spouse, 6 children)(18-64) | R115 |
| Member (65-74) | R146 |
| Member + Children (65 - 74) | R150 |
| Family (Member Spouse, 6 children)(65-74) | R175 |
| Member (75-100) | R235 |
| Member + Children (75-100) | R250 |
| Family (Member Spouse, 6 children)(75-100) | R300 |
| 1 + 5 Members (18-64) | R240 |
| 1 + 9 Members (18-64) | R280 |
| 1 + 13 Members (18-64) | R360 |
| 1 + 5 Members (65-74) | R285 |
| 1 + 9 Members (65-74) | R350 |
| 1 + 13 Members (65-74) | R420 |
| 1 + 5 Members (75-100) | R465 |
| 1 + 9 Members (75-100) | R500 |
| 1 + 13 Members (75-100) | R770 |



Catering Benefits:

We Take Care Of The Catering So You Can Take Care Of Your Loved Ones

- We do food preparations, serving and cleaning.
- We cook for a maximum of 100 guests.
- We bring our own crockery and cutlery.
- The family gets a chance to attend the funeral.
- Six months waiting period to be a full member.

| | |
|--------------------------|-------|
| Single Member (16-64) | R100 |
| Single Member (65-74) | R175 |
| Single Member (75-85) | R270 |
| Single Member (85-100) | R450 |
| Member + Spouse (18-64) | R200 |
| Member + Spouse (65-75) | R320 |
| Member + Spouse (75-85) | R500 |
| Member + Spouse (85-100) | R900 |
| 1+5 - (18-64) | R 485 |
| 1-9 (18-64) | R 790 |
| 1+13 (18-64) | R1095 |

Children under the age of 21 years

Inkomo Plan Get You A Cow And A Free Goat Or Sheep.

For Convenience For Your Funeral

Planning Needs Terms and Conditions will apply

| | |
|--------------------------|-------|
| Single Member (16-64) | R100 |
| Single Member (65-74) | R175 |
| Single Member (75-85) | R270 |
| Single Member (85-100) | R450 |
| Member + Spouse (18-64) | R200 |
| Member + Spouse (65-75) | R320 |
| Member + Spouse (75-85) | R500 |
| Member + Spouse (85-100) | R900 |
| 1+5 - (18-64) | R 485 |
| 1-9 (18-64) | R 790 |
| 1+13 (18-64) | R1095 |

Tombstone Plan Benefits:

Leave An Honorable Legacy With Tombstone Plan.

- Engraving and Installation
- Delivery within (50km from the branch)
- Unveiling Decor including Carpets, Covered Chairs and Gazebo • Still Water
- Fresh Flowers
- Same day installation after the funeral is available.

| | |
|--------------------------|-------|
| Single Member (16-64) | R100 |
| Single Member (65-74) | R175 |
| Single Member (75-85) | R270 |
| Single Member (85-100) | R450 |
| Member + Spouse (18-64) | R200 |
| Member + Spouse (65-75) | R320 |
| Member + Spouse (75-85) | R500 |
| Member + Spouse (85-100) | R900 |
| 1+5 - (18-64) | R 485 |
| 1-9 (18-64) | R 790 |
| 1+13 (18-64) | R1095 |

Leave An Honorable Legacy With A Grocery Plan.

On the death of principal member and spouse. This funeral cover benefit will pay R1 000 per month for 10 months towards groceries for the family. In addition.



| | |
|--------------------------|-------|
| Single Member (16-64) | R100 |
| Single Member (65-74) | R175 |
| Single Member (75-85) | R270 |
| Single Member (85-100) | R450 |
| Member + Spouse (18-64) | R200 |
| Member + Spouse (65-75) | R320 |
| Member + Spouse (75-85) | R500 |
| Member + Spouse (85-100) | R900 |
| 1+5 - (18-64) | R 485 |
| 1-9 (18-64) | R 790 |
| 1+13 (18-64) | R1095 |